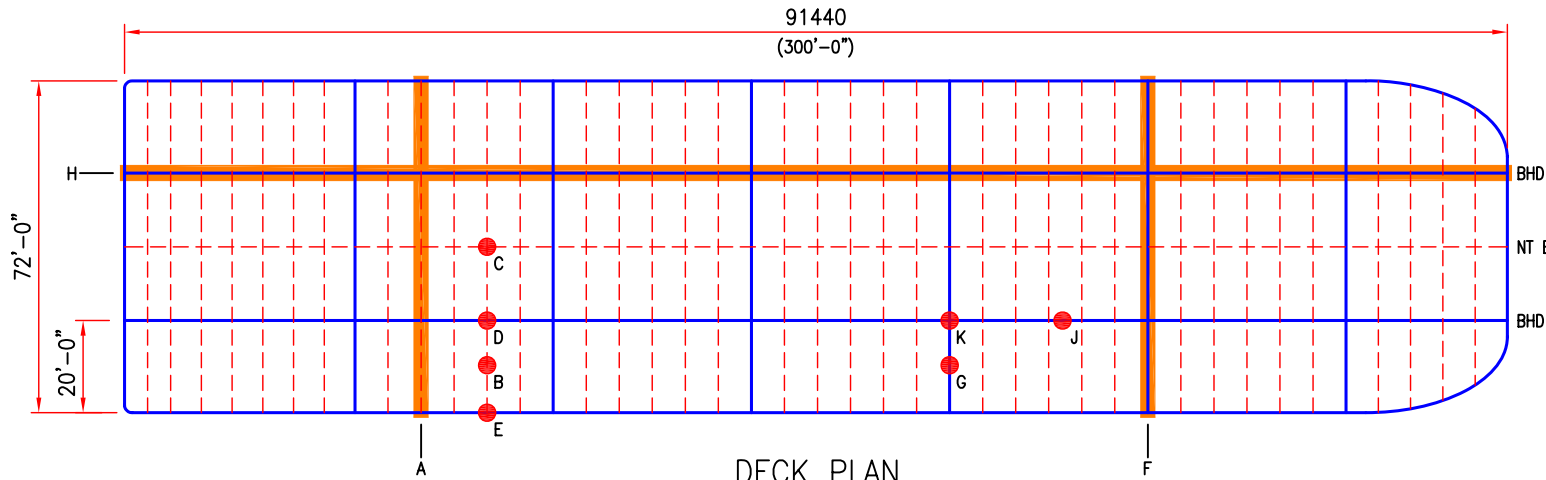
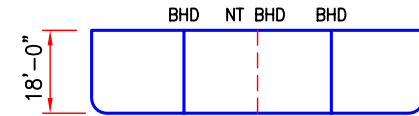


PROFILE



DECK PLAN

ATLANTIC TRADER

BARGE PARTICULARS

	ft
LENGTH	300.0
BREADTH	72.0
DEPTH	18.0
FRAME SPACING	7.2
TRANSVERSE BULKHEAD SPACING	43.0
LOADLINE DRAFT	14.3

BARGE CAPACITIES

UNIFORM DECK LOAD		1300lbs/ft ²
INTERMEDIATE TRANSVERSE WEBFRAMES:	REF	
UNIFORM DISTRIBUTED LOAD	A	9600lbs/ft
POINT LOAD (ANY POSITION)	B	10000lbs
POINT LOAD AT CENTRELINE	C	20000lbs
POINT LOAD AT LONGITUDINAL BULKHEAD	D	20000lbs
POINT LOAD AT SIDESHELL	E	22000lbs
TRANSVERSE BULKHEADS:		
UNIFORM DISTRIBUTED LOAD	F	18000lbs/ft
POINT LOAD (ANY POSITION)	G	34000lbs
LONGITUDINAL BULKHEADS:		
UNIFORM DISTRIBUTED LOAD	H	22000lbs/ft
POINT LOAD (ANY POSITION)	J	41000lbs
BULKHEAD INTERSECTION	K	75000lbs

NOTES:

- ALL POINT LOADS MUST SPREAD OVER A FOOTPRINT NO LESS THAN 20in IN DIAMETER.
- ALL POINT LOADS (EXCLUDING CL POINT LOAD, C) ARE AT ONE POINT ONLY PER FRAME EITHER SIDE OF CENTRE LINE.
- WHEN COMBINING LOADS, GLOBAL STRENGTH AND THE EFFECTS OF BALLAST DISTRIBUTION SHALL BE EVALUATED FOR EACH CASE.
- CAPACITIES STATED ARE BASED ON FULL PLATING & SCANTLING THICKNESSES

